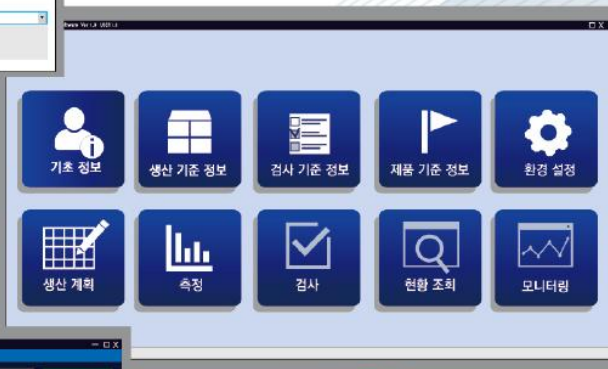


13

Integrated management and control system

Model MIS (Monitech Intergration System)



Monitech co.,Ltd.
www.monitech.co.kr

System Overview

- A system designed to control and monitor inspection results, measurements, PLC information, etc. acquired in the on-site process by integrating them all together.

The initial, interim and final products inspection record computerized management S/W + ARC/SPOT welding monitoring S/W + PLC inspection S/W, etc.

S/W essential for integrated factory management that enables you to analyze, inquire and control data regardless of the number of computers connected to the system as it is integrated into one place.

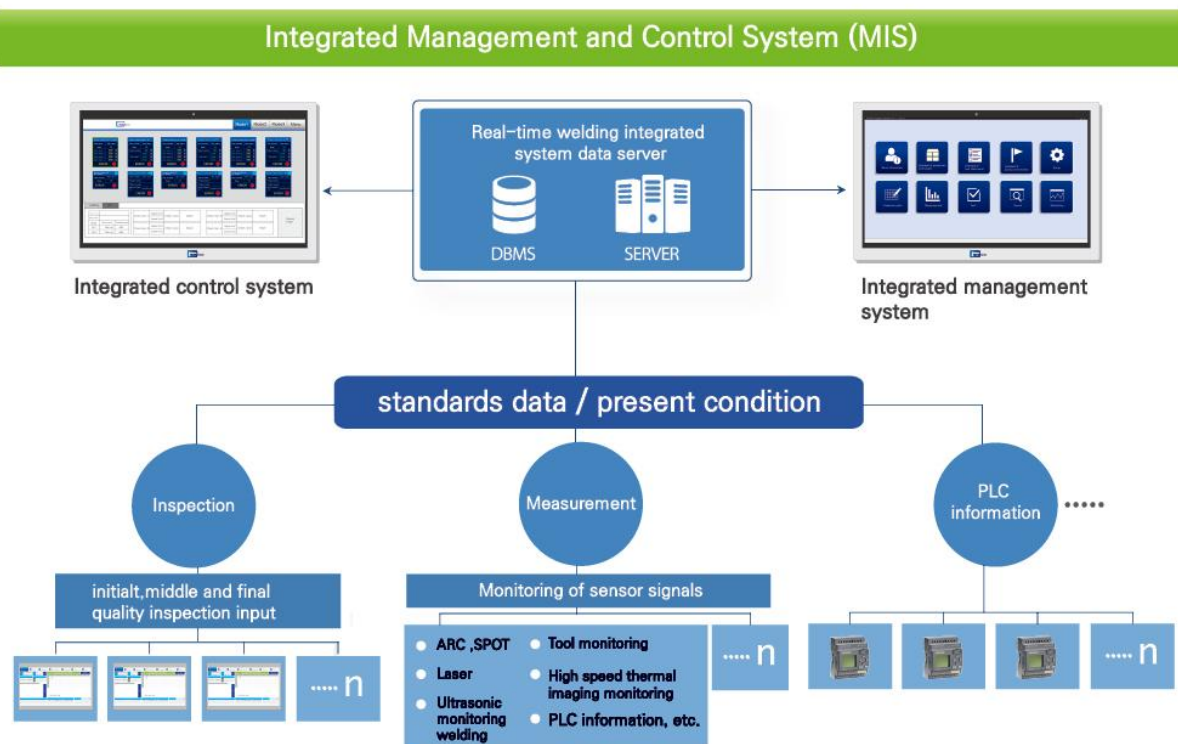
Main Features

- Computerization of measured data
- Real-time data measurement and control
- Data analysis and report creation
- Integrated network management

Main Purpose

- Process inspection management
- Welding process management
- Other inspection process management

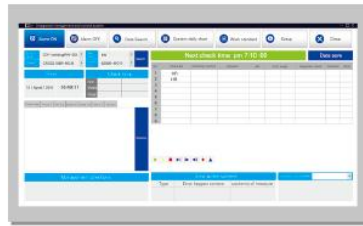
Basic Configuration of Integrated Management and Control System (S/W)



Example of S/W Main Screens



Integrated management system



Initial, middle and final inspection record computerized management system



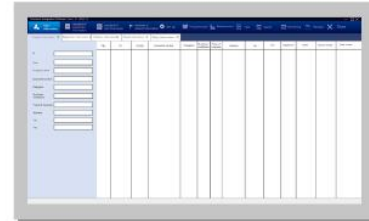
ARC/SPOT welding monitoring system



Integrated control system



Integrated management system (main screen of each menu)



Windows for information input

S/W Main Features

- Reference information management
- Item management
- Worker management
- Cp/Cpk process capability index analysis
- Time series data query and analysis
- Data management
- Integrated process control

Benefits

- Control user's basic information (user history management)
- Product production history and traceability management
 - Check and management of production date/time, etc. by user choice
- Real-time welding status and integrated control function, Determination of the product quality through real-time monitoring and 1 to many integrated management
- Process and facility management
 - Control and management of each process and facility conditions
- Establishment of production plan – Sheet for production plan by car model
- Interface with internal server network
 - Monitoring system integrated data management through construction of server
- Interface with ERP, MES enterprise management system
- Most suitable for integrated management of the first, middle and final inspection system in addition to real-time welding inspection management

Main Clients

Eunhye Co., Ltd., Changsung Corporation, Kyungjeon, BRM Co., Ltd., Wonpoong Industrial and more

Real-time welding quality control and inspection solution

Real-time welding monitoring system

- 01. Welding quality monitoring system (ARC/SPOT/TIG)
- 02. Intelligent welding monitoring system (NUT & BOLT Projection welding)
- 03. Welding calibration master equipment (ARC/SPOT/DUO)
- 04. MICRO SPOT welding monitoring system
- 05. High speed thermal imaging welding monitoring system
- 06. Ultrasonic welding monitoring system
- 07. Laser welding monitoring system

Welding process measurement and equipment

- 08. Welding force measuring gauge (FORCE)
- 09. Current and force gauge (HANDY)
- 10. Advanced current and force gauge (HANDY PRO)
- 11. Measuring analyzing equipment for WPS/PQR (WPS)
- 12. Welding waveform analysis management equipment (MULTI)

Inspection and integrated monitoring S/W

- 13. Integrated management and control system (MIS)
- 14. Inspection record computerized management system for the Initial, middle, and final products (IM)



Monitech co.,ltd.

ISO 9001 / ISO 14001 / INNOBIZ / Venture

Head office / R&D Center

92, Saebyeoksijang-ro, Sasang-gu, Busan,
46987, KOREA
Tel. +82-51-311-8691
Fax. + 82-51-311-8692
E-mail. monitech01@naver.com
Homepage www.monitech.co.kr
Blog. <http://blog.naver.com/yuria85>

Seoul branch / R&D Center

304, Sanjeong building
23, Gukhoe-daero 66-gil,
Yeongdeungpo-gu, Seoul,
07237, KOREA
Tel. +82-2-780-8691
Fax. +82-0303-0953-0954
E-mail. monitech2@naver.com